

# Adaptation to floods: Sustainability through flexibility

Alexia Rogers-Wright, University of Hull

## Supervised by:

Professor Graham Haughton  
Professor Tom Coulthard  
Professor Greg Bankoff



















# 2007 FLOODS IN HULL

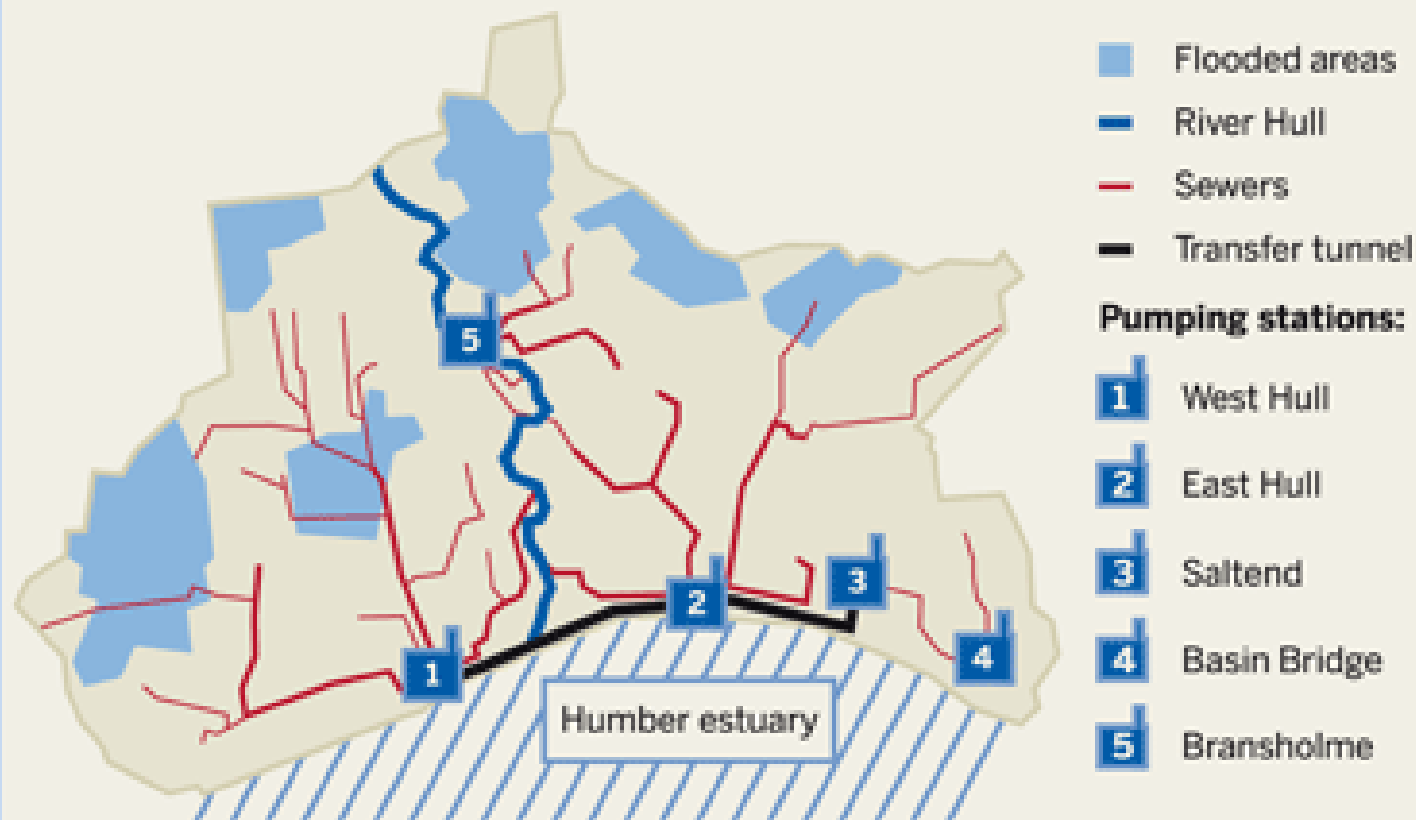
- 55000 properties flooded across the UK
- 8600 in Hull (over 15%)
  
- 6300 people in temporary accommodation in Hull
- Over 1400 people in caravans in Hull
  
- 91 of 99 schools in Hull closed

(Pitt, 2008; Coulthard *et al.*, 2007)

# 2007 FLOODS IN HULL

## FLOODING IN HULL, JUNE 2007



Flooding resulted from heavy rainfall overloading the pumped sewerage network

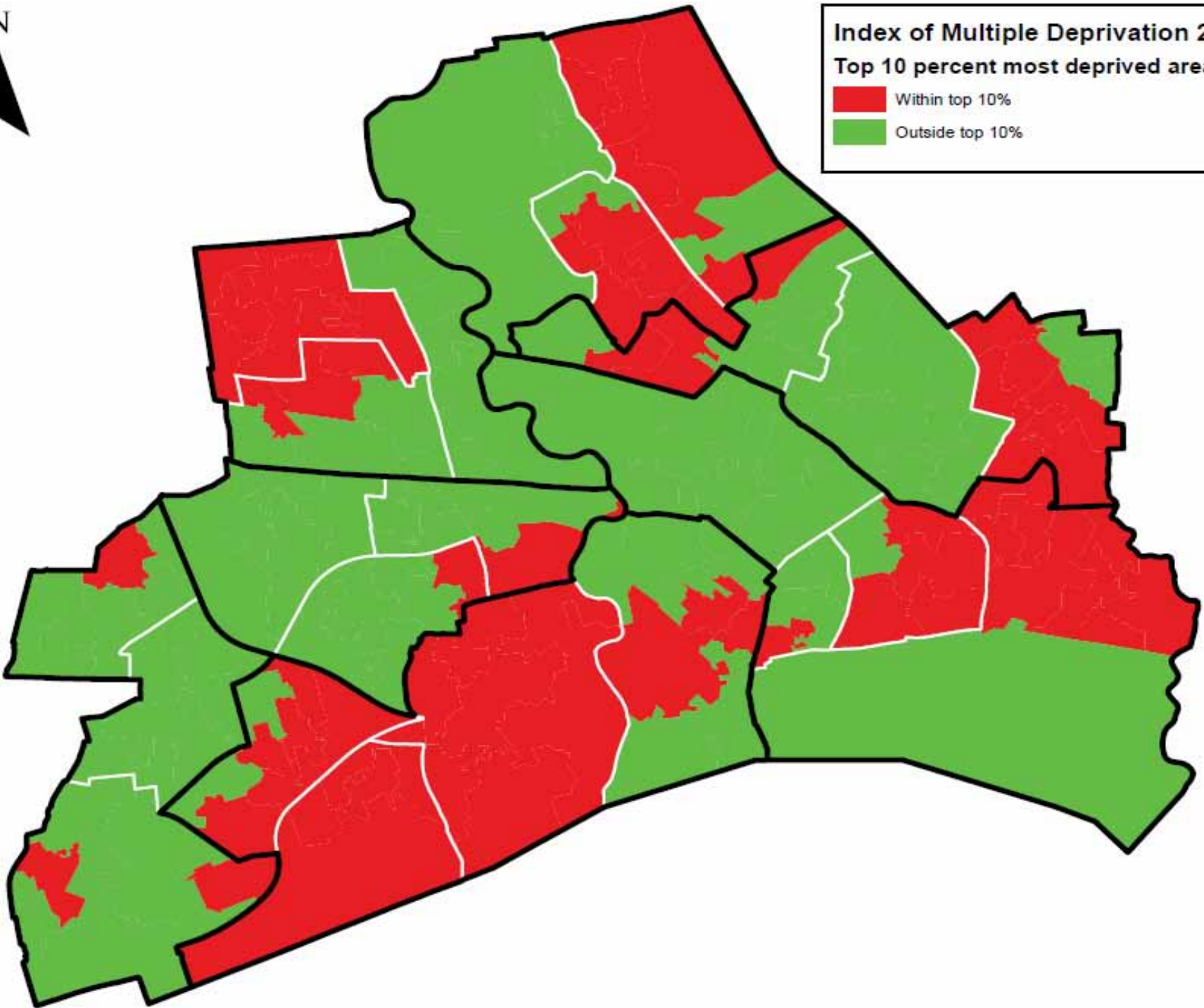


Source: Independent Review Body



**Index of Multiple Deprivation 2007**  
**Top 10 percent most deprived areas**



	Within top 10%
	Outside top 10%

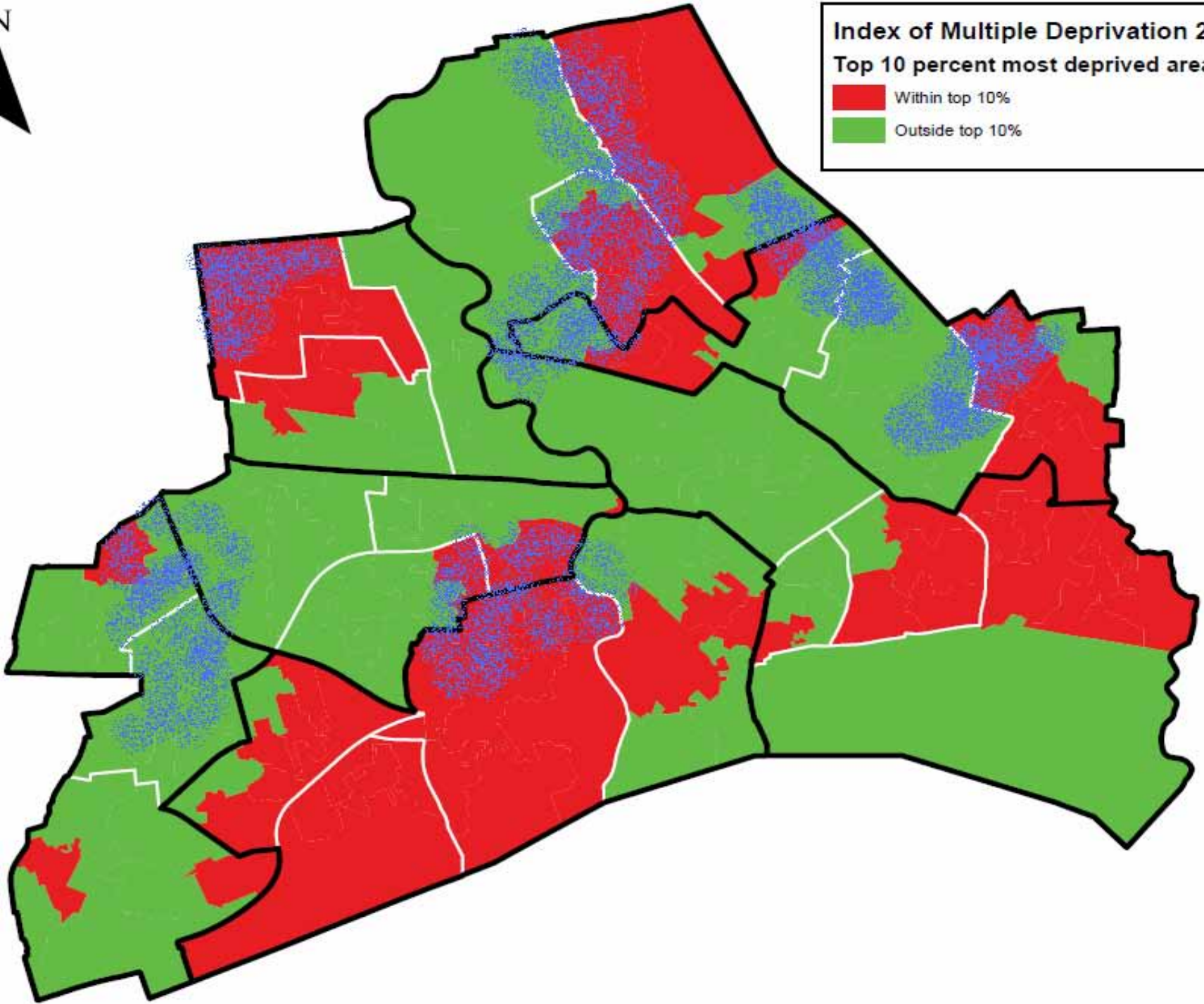


N



**Index of Multiple Deprivation 2007**  
**Top 10 percent most deprived areas**

	Within top 10%
	Outside top 10%



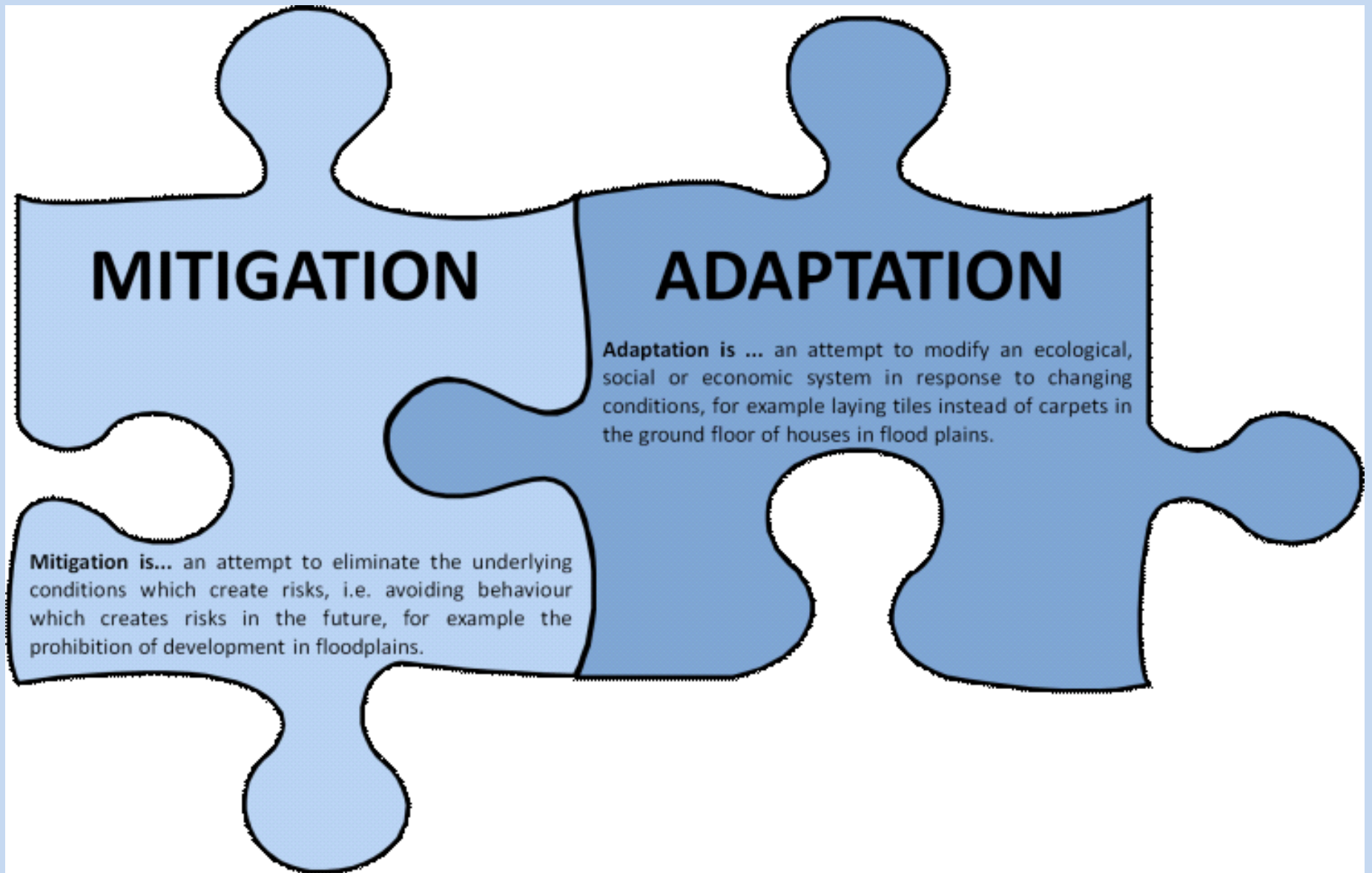
# New risks?

In the past, Hull has been affected by several types of flood risk:

- estuarine flooding from the Humber
- storm surges from the North Sea
- fluvial flooding from the River Hull

The floods in 2007 were **pluvial** (rainfall) – a hazard that had not previously affected Hull.

# THE FLOOD RISK MANAGEMENT PUZZLE



# MITIGATION



Flood Defences in Hull:  
The River Hull Tidal Barrier

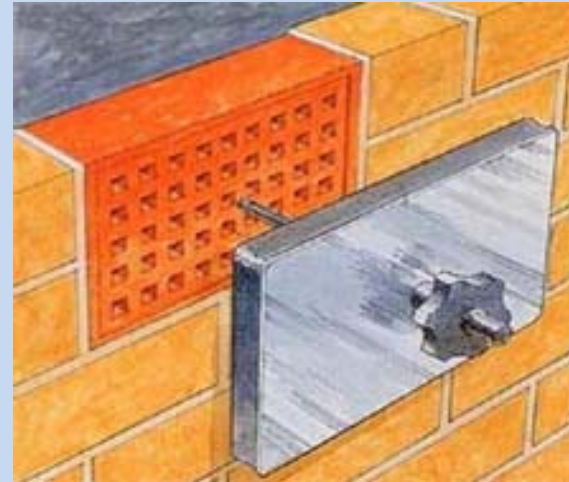


Drainage System in Hull:  
Bransholme Pumping Station

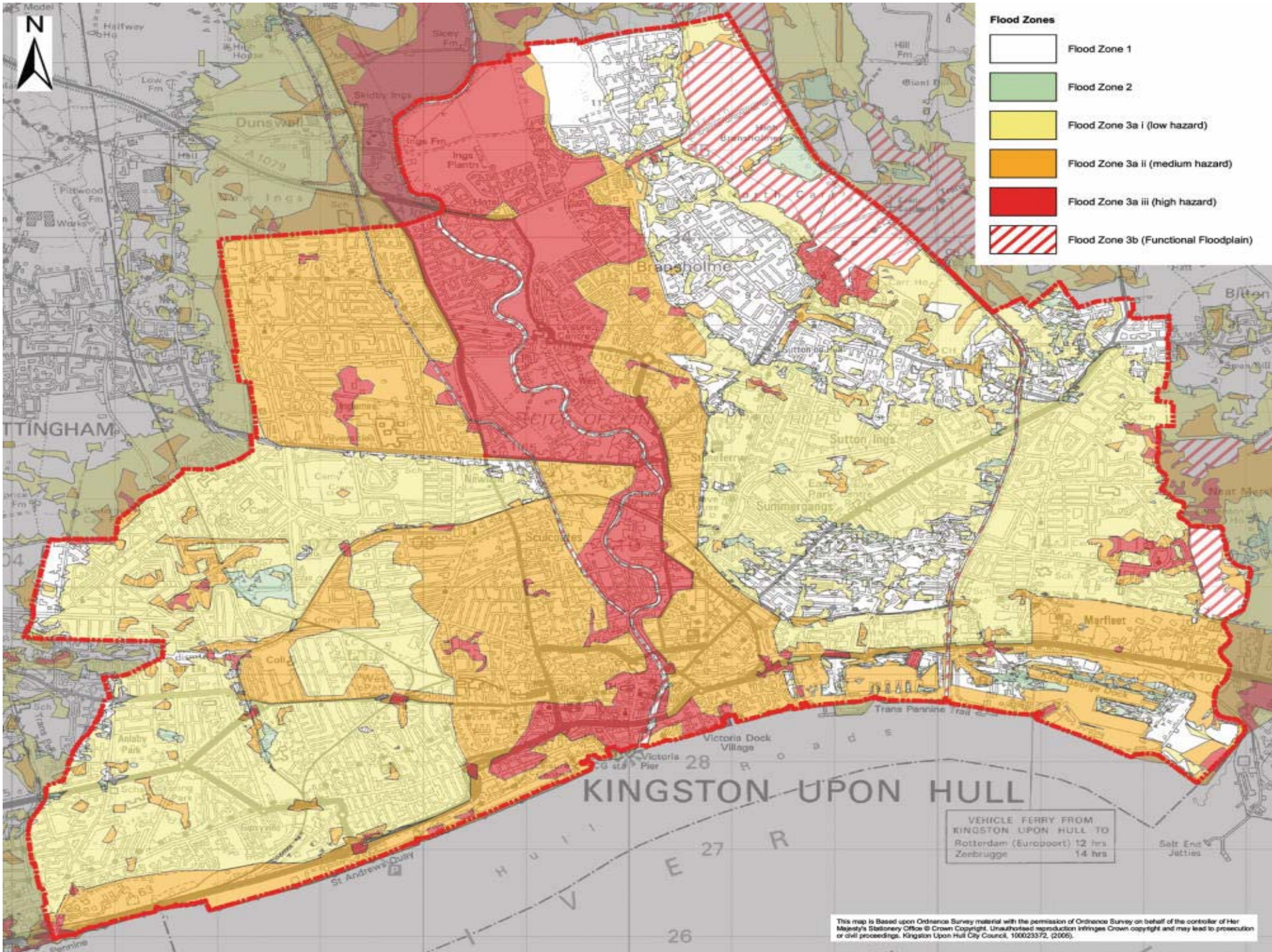
# ADAPTATION



Flood Pathway Management:  
Temporary Flood Barriers



Flood Resistant Building Materials:  
Airbrick Plugs



This map is Based upon Ordnance Survey material with the permission of Ordnance Survey on behalf of the controller of Her Majesty's Stationary Office © Crown Copyright. Unauthorised reproduction infringes Crown copyright and may lead to prosecution or civil proceedings. Kingston Upon Hull City Council, 100023372, (2006).

# This research...

- How flood governance changes over time
- Hull's flood governance policies before and after 2007 flood
- Adoption of adaptation strategies

# Methodological Challenges

- Collaborative partner's interests
- Multiple stakeholders
- Sensitivity of information
- Live debate

# Any Questions?

This PhD is being undertaken by **Alexia Rogers-Wright** in the University of Hull Geography Department.  
It is an ESRC CASE project with Hull City Council.  
Corresponding author: [a.f.rogers-wright@2008.hull.ac.uk](mailto:a.f.rogers-wright@2008.hull.ac.uk)

## Supervised by:

Professor Graham Haughton  
Professor Tom Coulthard  
Professor Greg Bankoff

